



51-701 SINGLE REGULATED
51-702 DOUBLE REGULATED

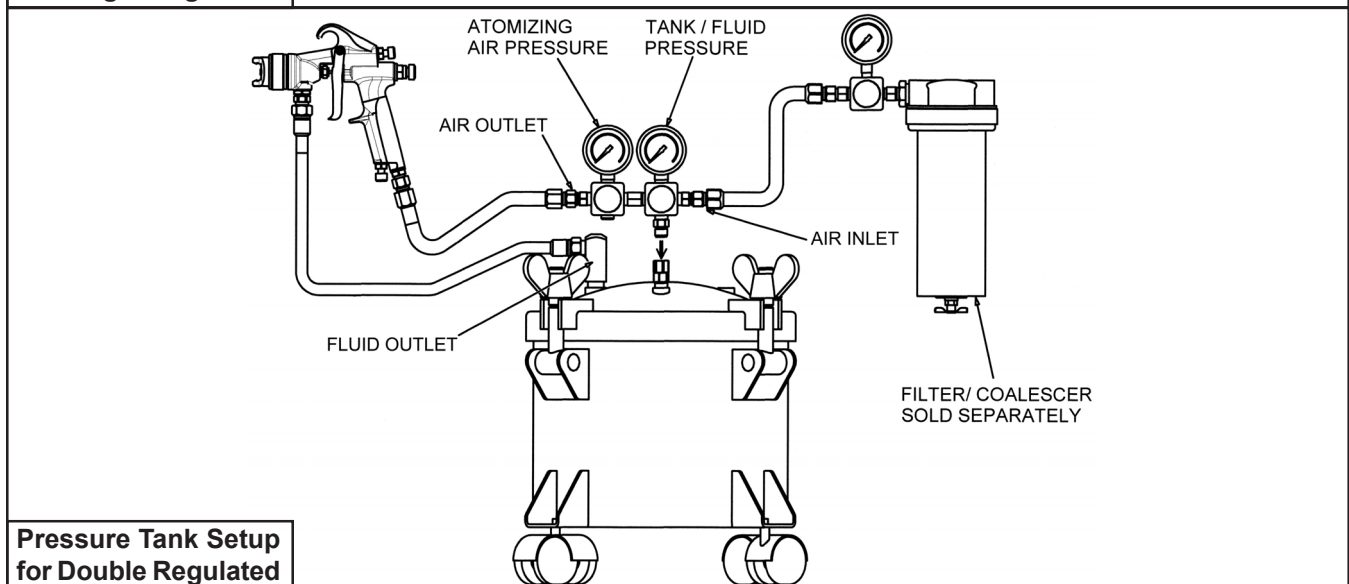
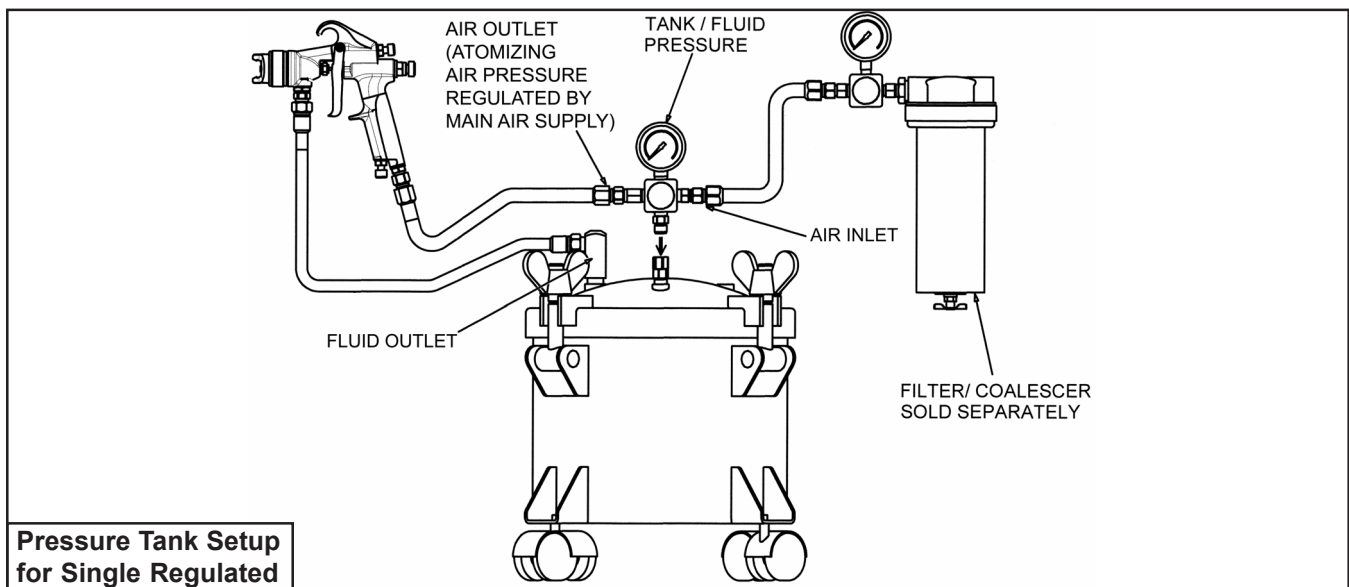
IMPORTANT NOTE: IF THIS PRESSURE TANK IS TO BE USED FOR SPRAYING FLAMMABLE MATERIALS, OPERATOR MUST NOT PRESSURIZE THIS TANK MORE THAN 15 PSI TO MEET OSHA REQUIREMENTS. FOR NON-ASME PRESSURE VESSELS. IT IS THE RESPONSIBILITY OF THE OPERATOR TO FOLLOW THIS MANDATORY PROCEDURE.

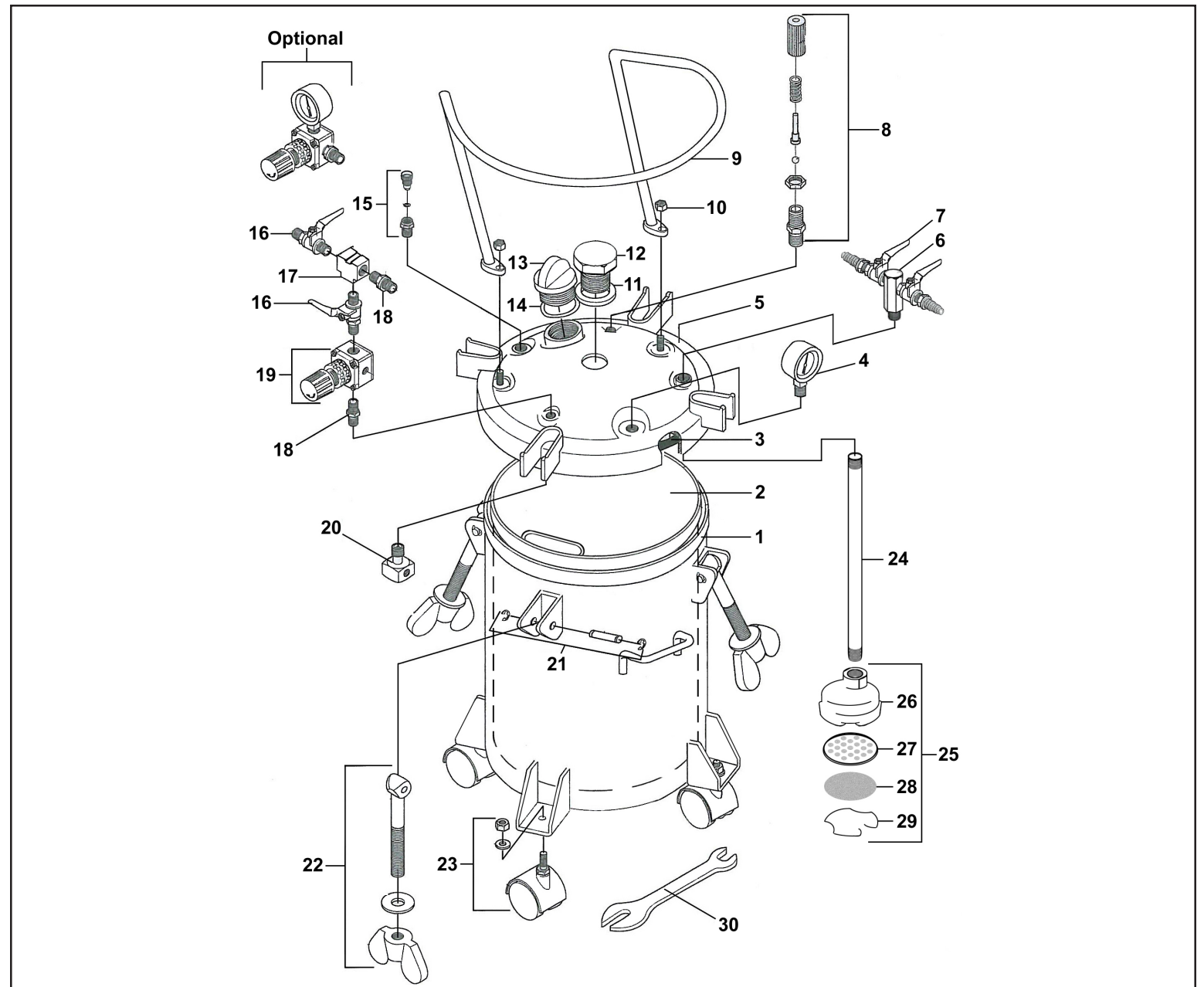
GENERAL INFORMATION

This pressure tank is equipped with either single or double air pressure regulation, material outlet shutoff valves for 2 guns, pressure safety relief valve, disposable plastic liner, tank vent valve and four caster wheels.

CAUTION!

1. Maximum tank pressure of 80 psi. The safety relief valve is designed to protect the tank against excessive pressures. **DO NOT** attempt to make adjustments to this valve. If this valve begins to vent air, reduce the setting on the air inlet regulator.
2. **DO NOT** alter the tank in any way by welding, drilling or machining as this may weaken the structure of the tank.
3. To prevent hazardous static sparks from occurring, always ground the tank by connecting a 12 ga. wire to the tank and to a known earth ground.
4. Halogenated solvents will react chemically with aluminum and may cause an explosion. Examples of halogenated solvents are 111 trichlorethane and methylene chloride. **DO NOT use the removable aluminum tank liner with any halogenated solvents.**
5. Be sure tank pressure is completely relieved before attempting to remove tank cover or material fill cap. Shut off the main air supply to the tank and vent pressure using the vent valve located on the tank lid.





ITEM NO.	PART NO.	DESCRIPTION	ITEM NO.	PART NO.	DESCRIPTION
1	51-726	Tank Shell	16	52-150	Air Shut Off Valves
2	51-543-10	Disposable Plastic Tank Liner (10pk)	17	51-272	3-Way Union
	51-739SS	Optional SS Tank Liner	18	51-239	Double Male Nipple
3	51-720	Gasket (Available in 3 Pack)	19	52-6	Air Regulator (51-222 Opt. 2nd Reg)
4	52-58	Pressure Gauge	20	51-237	Air Flow Diffuser
5	51-725	Tank Lid Assembly	21	51-233	Pin Assembly
6	51-530	Material Outlet Manifold	22	51-236	Eye Bolt Assembly
7	52-151	Material Outlet Ball Valve		23	51-224
8	51-229	Safety Relief Valve Assembly	51-252		Optional Stationary Feet (4 Req'd)
9	51-535	Guard	24	51-727	Fluid Pickup Tube
10	98-0115	Nut 3/8-16	25	51-532	Inlet Strainer Assembly
11	51-245	Seal Ring	26	51-548	Inlet Strainer Body
12	51-533	Plug	27	51-549	Inlet Screen Backup Plate
13	51-524	Material Fill Cap	28	51-542	Inlet Screen
14	51-522	Seal Ring - Filler Cap	29	51-519	Inlet Screen Retaining Clip
15	51-234	Tank Vent Valve	30	51-225	Wrench

Pressure Tanks Available From C.A. Technologies



2.5 Gallon Pressure Tank
51-201 Single Regulated
51-202 Double Regulated



2.5 Gallon Pressure Tank
With Air Powered Agitation
51-203 Single Regulated
51-204 Double Regulated



5 Gallon Pressure Tank
With No Agitation
51-507 Single Regulated
51-508 Double Regulated



5 Gallon Pressure Tank
With Manual Agitation
51-501 Single Regulated
51-502 Double Regulated



5 Gallon Pressure Tank
With Air Powered Agitation
51-503 Single Regulated
51-504 Double Regulated



10 Gallon Pressure Tank
With No Agitation
51-551 Single Regulated
51-552 Double Regulated



10 Gallon Pressure Tank
With Manual Agitation
51-557 Single Regulated
51-558 Double Regulated



10 Gallon Pressure Tank
With Air Powered Agitation
51-553 Single Regulated
51-554 Double Regulated